



UNIVERSITY OF  
BIRMINGHAM



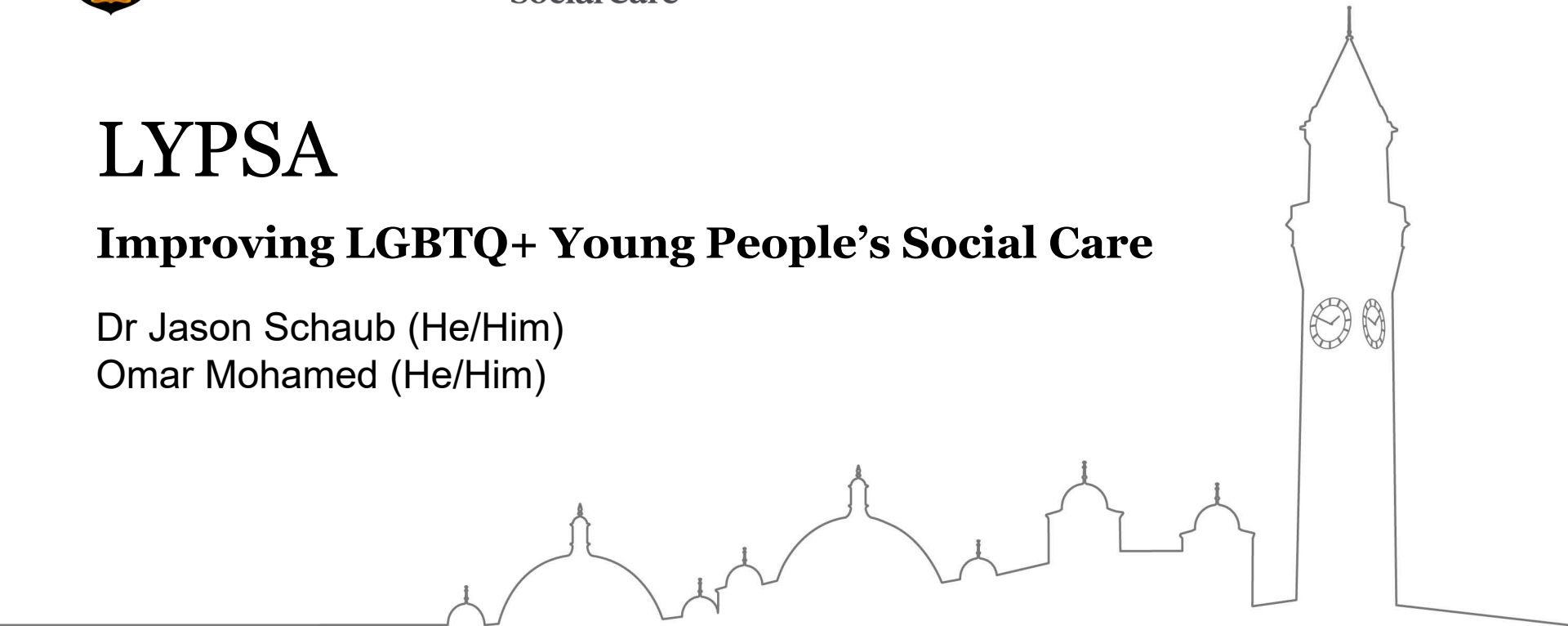
What Works for  
**Children's  
Social Care**

# LYPSA

## **Improving LGBTQ+ Young People's Social Care**

Dr Jason Schaub (He/Him)

Omar Mohamed (He/Him)



# Lgbtq+ Young People in Social cAre (LYPSA)



---

LGBTQ+ youth have received **little attention** in social care practice, research & policy

---

Aim: to improve the social care experiences of LGBTQ+ young people

---

**Collaborative & co-produced** (including LGBTQ+ young people with lived experience)

---

Work closely with **stakeholder groups** connected to youth in care, LGBTQ+ people and social work/care

---

Study 1: **Scoping review** about LGBTQ+ young people experiences of social care (submitted for publication);

Study 2: **Interviews** of LGBTQ+ young people's experiences of residential social care;

Study 3: **Testing** an **online training package (CPD-accredited)** for social workers supporting LGBTQ+ youth



UNIVERSITY OF  
BIRMINGHAM





## Discussion/Reflection

Challenges facing LGBTQ+ young people in care

Challenges experienced supporting LGBTQ+ young people in care

How do you support LGBTQ+ youth? Any strategies or resources to recommend?



# LGBTQ+ Young People's Experiences in Care: Scoping Review Findings

Research remains scarce & of variable quality

LGBTQ+ youth are more likely to end up in care

Experience more placement moves, longer duration in care

Poorer physical health, mental health & wellbeing outcomes

Racial/ethnic minority, lesbian/bisexual, transgender & nonbinary youth face particular challenges



## Scoping Review Findings (Cont.)

Face heightened educational barriers & challenges

LGBTQ+ youth more dissatisfied with their care experiences than non-LGBTQ+ youth

Pathways to care incl. family or caregiver rejection (related to actual or perceived LGBTQ+ status)

Greater risk of homelessness & exploitation after care, more survival sex for food & shelter

Social workers & foster carers report lack of adequate LGBTQ+ knowledge or training, some homo/bi/transphobic attitudes

**Report available at: <http://birmingham.ac.uk/lypsa>**

# Being a Young Advisor on a Research Project

1 of 4 Young Advisors – critical friend

- For Study 1 & 2 involved in:  
Analysis  
Refining data selection tool  
Interview questions
- Study 3 and future involvement:  
Recruitment  
Further analysis  
Research paper



UNIVERSITY OF  
BIRMINGHAM

For YouTube clips of young advisors discussing their involvement in LYPsa, please visit: <http://birmingham.ac.uk/lypsa>

# LGBTQ+ Young People in Residential Care: Interview Themes (Early Findings)

*Interviews with 20 LGBTQ+ young people about their experiences of residential social care*

- Report both positive & negative experiences in residential care
- However, **widespread** evidence of homo/bi/transphobia & policing of gender norms
- LGBTQ YP often hide sexual orientation or gender identity/expression – from peers, staff, placement, social worker, and birth family
- Multiple disruptions (multiple placements, high staff turnover)
- Sexuality-related needs are not being met



Report will be available November 2022



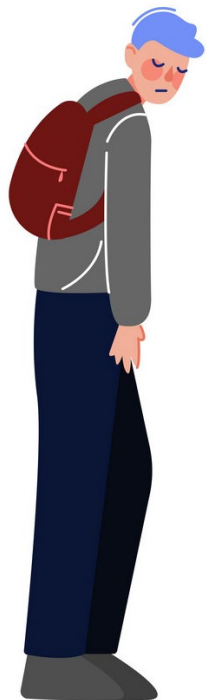
UNIVERSITY OF  
BIRMINGHAM

 What Works for  
Children's  
Social Care



**Figure 1.** Push and pull elements in relation to LGBTQ+ youths health and wellbeing in (residential) care





## Placement/Academic Disruption

“

Moving from [South East England] to [East Midlands] was not great, because – obviously, I couldn't go to schools down there. I wasn't at any schools down there at the time anyway. But obviously, when I was doing emergency placements I would go to a place for the night, then my social worker or one of their colleagues would pick me up in the morning, and then I would spend the day at the social worker's office, and they'd try and get me a bed by 8.00 pm that night. **That went on for six weeks, every single night.** Apart from some weekends, I'd got to be there for a couple of days. But literally, every day a different care home or foster home... I was going from one side of the county to the other every day. I spent extreme amounts of time out of school.

”

17, White British, Bisexual, Trans Man

# Policing of Gender Norms

“

I never came out as non-binary whilst I was in care, not whilst I was in residential care. But there were quite a lot of issues around gender expression, because I was more comfortable wearing masculine clothes ... And obviously, when you're in care, you get a clothing allowance and my support worker was like, **'You're not wearing boys' clothes, you are not buying boys' clothes, you are not going to the boys section at all.'** So, I ended up buying a couple of sets of boxers. She found out and went ballistic... 'You need to return these right now.' I was like, 'Sorry, but they're not returnable.'

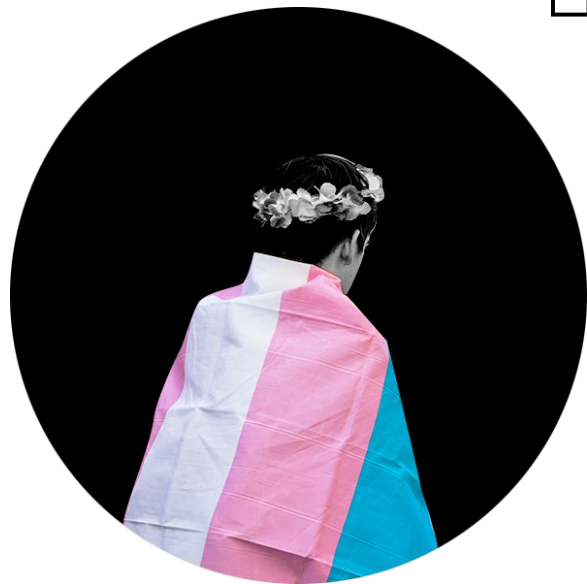
*18, White British, Bisexual, Non-Binary*

”



# Transphobic Experiences and Minimisation

---



When I was coming to terms with my gender [and not out], I was eating dinner with [residential staff members]. We started talking about trans issues and my key-worker mentioned that her son had a friend that was trans. They then started talking about how you know if someone's trans or not and my key-worker brought up a group photo of her son and his trans friend and they played a game where they tried to figure out who the trans person was ... I was just there, kind of trying to ignore it... [one of the workers] pointed out who she thought was trans, and my key-worker was like, 'No, that's my son.' The other worker made a joke, like, 'Ha, ha, is your son trans?' And my key-worker said, '**I would kill him if he was trans**'. I wrote a really long e-mail detailing the entire event; I sent it to the manager of the home. I also copied in my mum, because they respect adults more than they respect the young people of the home. For days, **I heard nothing of this complaint. Nothing come back to me about it.** At one point, I spoke to the care manager, and was like, 'Did you see the e-mail I sent you?' and she was like, 'yeah, yeah' – completely dismissed it.

17, White British, Bisexual, Trans Guy





## Current Study: LGBTQ+ Knowledge Programme Trial

Evaluates effectiveness of an e-learning training module for social workers to support LGBTQ+ youth

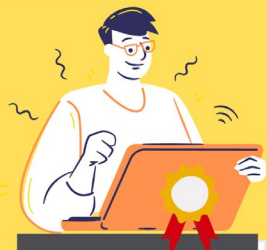
Using a pre-existing, already widely accessible e-module (CPD-accredited, takes less than 2 hours to complete)

Seeking national-size sample of children's social workers from across England

Two groups, one will receive the training, both groups will complete 2 sets of short surveys

## Call for participants

ARE YOU A SOCIAL WORKER WORKING IN  
CHILDREN'S SERVICES?



Interested participants  
must be:

- Employed by a local authority in England;
- Work in children's social care services; and also,
- Registered with Social Work England.

Managers, senior managers & supervising social workers of foster carers can also take part provided they work for an English local authority.

We are looking for social workers in England to help test the effectiveness of an e-learning training module for supporting LGBTQ+ young people. The e-module is CPD accredited & takes less than 2 hours to complete.

Participants in the study will be randomly assigned to one of two groups: one group receiving the free online training & the other receiving business-as-usual equality & diversity training from their local authorities.

All participants will complete short online surveys about supporting LGBTQ+ young people & receive a £10 e-gift voucher for their time.

Interested children's social workers, managers or supervisors can register to participate [here](#) or visit our website below.

If you have any questions, please contact:

Dr Willem Stander  
Email: [w.stander@bham.ac.uk](mailto:w.stander@bham.ac.uk)  
Website: [birmingham.ac.uk/ypsa](http://birmingham.ac.uk/ypsa)



UNIVERSITY OF  
BIRMINGHAM



Trial seeking children's social workers to participate until the end of November 2022. Participants must be:

- Registered with Social Work England
- Employed by a local authority in England
- Work in children's social care services

**Note:** managers, senior managers & supervising workers of foster carers also eligible provided they work for a local authority in England.

Connections to other social work teaching partnerships or communications networks welcome (e.g., newsletters, mailing lists)

Registration page:

[https://bham.qualtrics.com/jfe/form/SV\\_2916cgQLLh8F4nl](https://bham.qualtrics.com/jfe/form/SV_2916cgQLLh8F4nl)



# Case Study Discussion

Review the case studies

Identify what actions social care might undertake





# Next Steps / Resources

---

## Dissemination Plans:

- reports, journal articles (incl. article with young advisors describing their experiences of contributing), practice briefings
- conference presentations
- animated video (to present findings from study 2, narrated by young advisors)

## Resources:

- **Schaub, J.** and Greenchester, A. (2022) Gender and sexuality: ensuring social work meets LGBTQ+ people's needs. Practice Guidance. *Community Care Inform*.  
[online] <https://adults.ccinform.co.uk/practice-guidance/gender-and-sexuality-ensuring-social-work-meets-lgbtq-peoples-needs/>

# Further Information

**Dr Jason Schaub**

[j.schaub@bham.ac.uk](mailto:j.schaub@bham.ac.uk)

**Dr Willem Stander**

[w.stander@bham.ac.uk](mailto:w.stander@bham.ac.uk)

**Dr Jolie Keemink:**

[j.r.keemink@kent.ac.uk](mailto:j.r.keemink@kent.ac.uk)



**SCAN ME**

**Study 2 Registration Link (online training programme for social workers):**

[https://bham.qualtrics.com/jfe/form/SV\\_2916cgQLLh8F4nl](https://bham.qualtrics.com/jfe/form/SV_2916cgQLLh8F4nl)

**Project website:**

<https://birmingham.ac.uk/lypsa>



**UNIVERSITY OF  
BIRMINGHAM**



**What Works for  
Children's  
Social Care**

